

THE OCT/TS OUTPOST

OFFICE, CLERICAL, TECHNICAL AND
TRANSPORTATION UNIT OF DISTRICT
#18

APRIL 2018

PRESIDENT: Susan Brighton

NEW:

susan.brighton@d18.osstf.ca

1 519 843 4043 ext. 227

1 866 264 4425

1 519 843 6260 fax

1 519 943 4659 cell

www.d18.osstf.com

KEEP THESE DATES IN MIND:

April 11, 2018 Day of Pink

April 18, 2018 Meet Us Half Way

April 19 – 20, 2018 OASBO

April 27, 2018 PD Day at Erin DHS

Although care has been taken in preparing the information contained in this publication, accuracy cannot be guaranteed. The opinions and views expressed do not necessarily reflect those of OSSTF District #18. We reserve the right to edit for content and/or space.

SOME USEFUL CONTACTS:

OTIP: 800 267 6847

519 888 9683

OR www.otip.com

EAP: 1 800 387 4765

100% CONFIDENTIAL

OMERS:

1 800 387 0813 OR

416 752 6843

OSSTF Provincial Office:

1 800 267 7867

416 751 3394 FAX

My OSSTF if you have forgotten

Your password email

osstf-member-help@osstf.ca

www.osstf.on.ca

YOU ARE ENTITLED:

To have union representation in any meeting you are called into by your administrator/management. Please use the numbers above if you need my support and or assistance.

Dear Members,

Well March Break is definitely behind us, spring is sure to start peeking out from behind the snow clouds, gracing us with warm weather and refreshing showers soon.

This time of year I always find that the pace picks up because everyone realizes there really isn't all that much time left - the school year ends in less than 80 days!

The Executive has been working tirelessly to put together our plan for Meet Us Half Way. We will be holding four different after work events for all of our members. Please see the attached schedule, choose one of the four options and come out for a chance to meet your elected Executive, meet co-workers and colleagues in a non-work environment. The Union is happy to provide each member with a free liquid refreshment of their choice and trays of appetizers will be available for a light snack.

At each event there will be a \$100 cash draw taken for each member that has RSVP'd for that event by the deadline. You must be present to win the draw that will take place by 6:00 p.m. All deadlines are one week prior to the event to give our hosts the ability to prepare enough food for all of us.

Send all RSVPs to
danelle.smith@d18.osstf.ca.

Looking forward to seeing many of you there!

Susan Brighton

COLLECTIVELY SPEAKING!

Benefits:

A memo was sent out to members the week prior to the Easter weekend stating that last years missed benefit fees for the months of July and August would be collected this May and June. This year's July and August benefit fees will come out in September and October.

Please be diligent and make sure that the correct amounts are taken off your pay slips according. Report any errors immediately to OTIP. As much as I would like to be able to assist members with the ongoing problems we are having with OTIP they will not discuss individual members details with me because of FOI. I am happy to advocate on your behalf but that is the limit of my ability to assist.

I have once again attached the chart for your reference when dealing with OTIP issues.

PD Day Mark your calendar

The PD Day for OCT/TS will be held at Erin District High School on April 27th.

We have a full day planned for you and are looking forward to having you all attend.

Registration will open on Monday, April 9th at noon and will close on Friday, April 20th at 4:00 p.m



OTIP RAEO.

Education employees can save on car and home insurance.

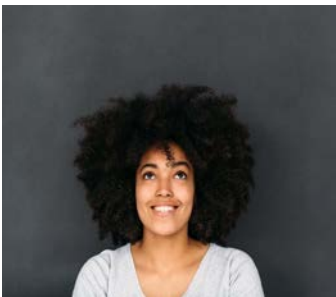
Did you know that OTIP can save Ontario education employees up to 25% on car insurance?

You can also save up to 50% on home insurance when you insure both your car and home with OTIP!

Visit

www.OTIPinsurance.com/savings

and start saving today!



To learn more, visit

www.otip.com/article21

*Restrictions apply.

It's Tax Time

All T4s have been issued by the Payroll department and it is your responsibility to download the documents you require to file your 2017 Tax Return.

The personal code that you use to retrieve your bi-weekly pay receipt is the same code you would use to retrieve your T4.

Please be responsible and take care of this without bothering the Payroll department unless absolutely necessary. Thank you for understanding how very busy this department is on any given day.

Communication Changes Coming

Within the next couple of months we will be changing over to a new website as each bargaining unit will be responsible for their own updating onto the webpage. You will be able to access it through the OSSTF District 18 website that you currently use and then save it as one of your favorites for easier access. On the new website, all Newsletters, DBU's that pertain to our members, and links to other pertinent webpages will be available. There will also be a new email system for all Newsletters, DBU's OTIP and any other information will now be sent to your personal email. Only urgent information will be sent to your UGDSB email.

At our upcoming PD Day we ask that you register your personal email on a door prize draw ticket. Your email address will not be shared or used for any purpose other than keeping you up to date with Union activities.

Upsetting News from OTIP

All members should have received notification from OTIP that your LTD contributions will be going up by approximately 50%.

I feel the pain that you are feeling. The explanation is that there has been a dramatic increase in the number of members being placed on LTD and for protracted periods of time.

In my capacity as your President and having the opportunity to discuss our member's health and their LTD needs with the individuals unfortunate enough to need these services it has become increasingly clear that OTIP statement of increased use is valid.

As a Union, with the assistance of the other Support Staff Presidents we have been successful in obtaining a meeting with all the players from the Board and from OTIP. We will meet on May 3 to discuss the options that may or may not offer us solutions that would decrease the monthly fees.

There are many factors that have to be considered when adjusting fees for LTD. Decisions made early can have a detrimental effect on member's retirement income. We do not want to be hasty with our decisions or recommendation.

So I am asking for your understanding at this time. Bear with us while we try to make the best possible decision for members now and in the future.